

**CARNAHAN · PROCTOR · CROSS, INC.**

CONSULTING ENGINEERS · SURVEYORS · PLANNERS

6101 WEST ATLANTIC BOULEVARD, MARGATE, FLORIDA 33063  
PHONE: 954-972-3959 FAX: 954-972-4178

AUGUST 2002

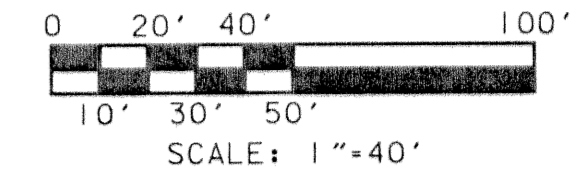
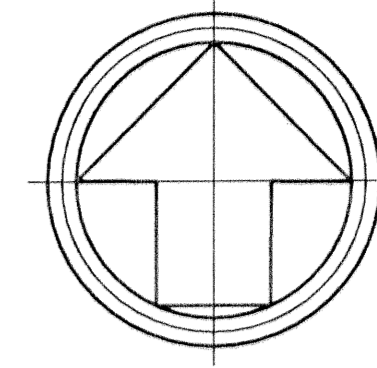
991010

JJM

ANTHONY GROVES P.U.D.

# ANTHONY GROVES PHASE 2

A PORTION OF SECTION 1, TOWNSHIP 44 SOUTH, RANGE 41 EAST,  
VILLAGE OF ROYAL PALM BEACH, PALM BEACH COUNTY, FLORIDA



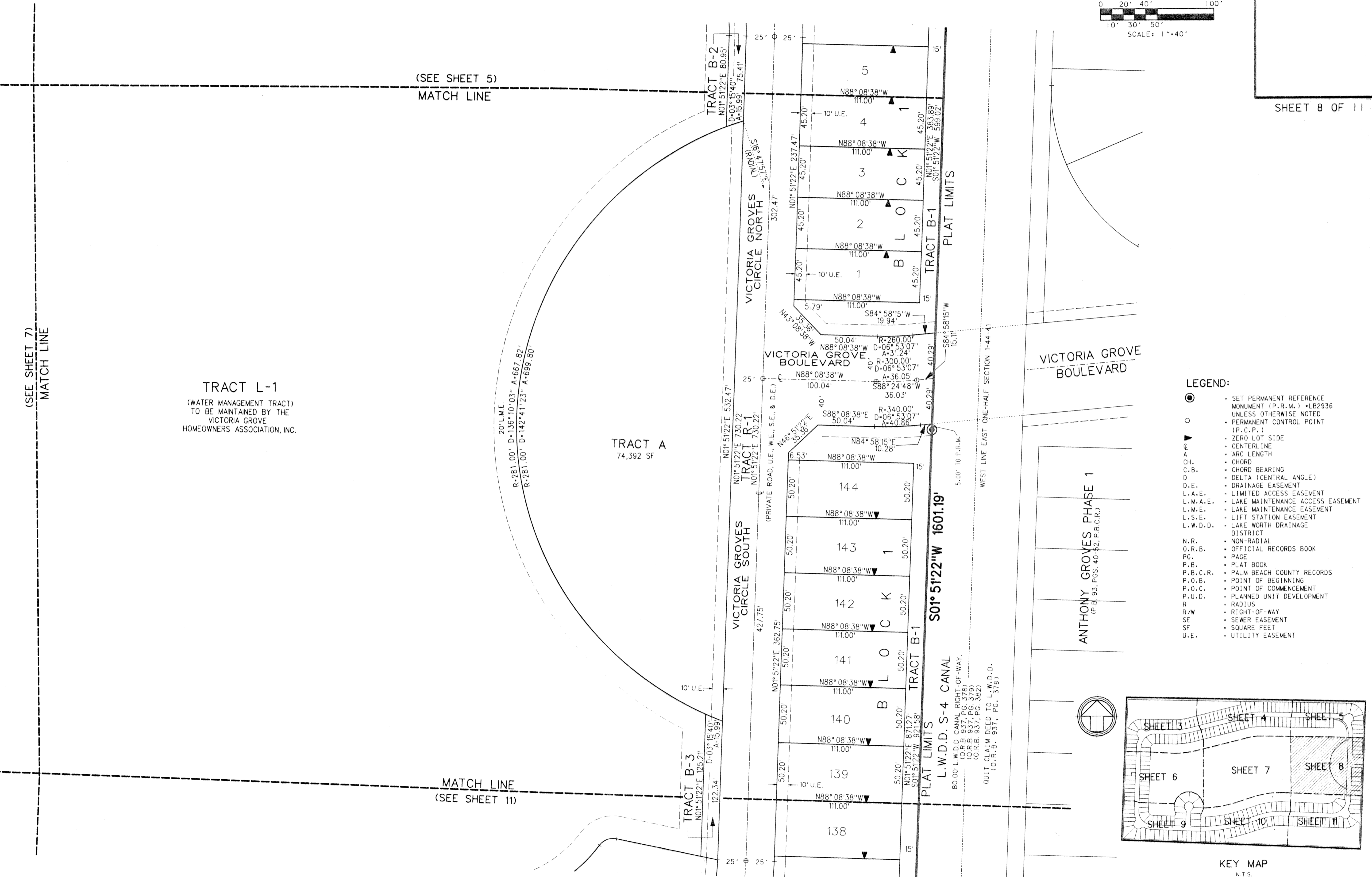
(SEE SHEET 7)  
MATCH LINE

(SEE SHEET 5)  
MATCH LINE

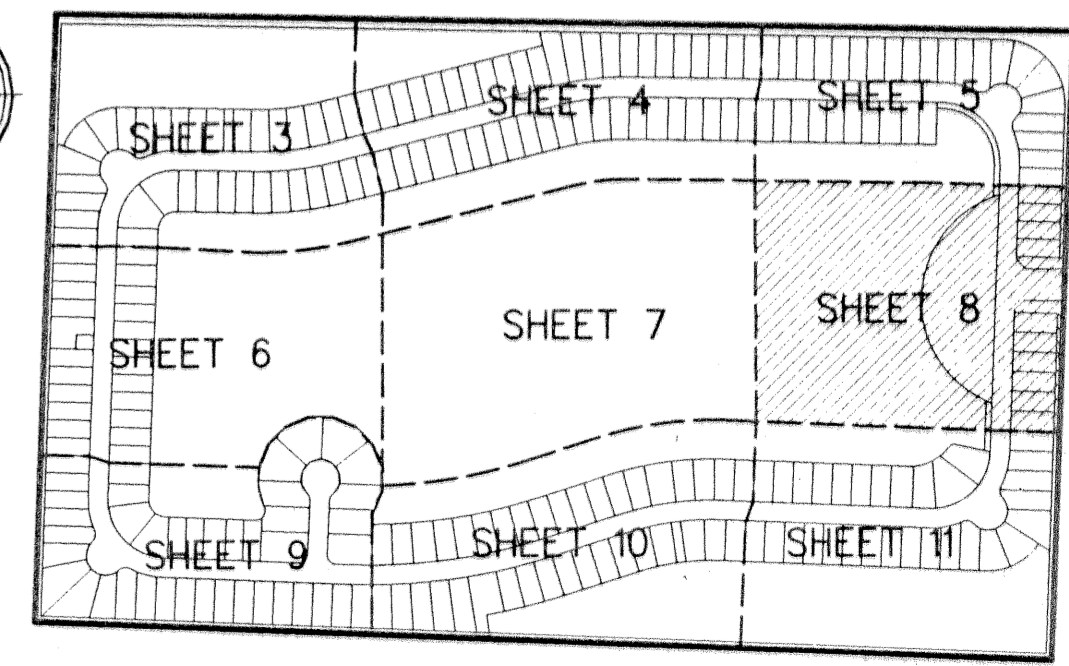
**TRACT L-1**  
(WATER MANAGEMENT TRACT)  
TO BE MAINTAINED BY THE  
VICTORIA GROVE  
HOMEOWNERS ASSOCIATION, INC.

**TRACT A**  
74,392 SF

MATCH LINE  
(SEE SHEET 11)



- LEGEND:**
- SET PERMANENT REFERENCE MONUMENT (P.R.M.) \*LB2936 UNLESS OTHERWISE NOTED
  - PERMANENT CONTROL POINT (P.C.P.)
  - ▲ ZERO LOT SIDE
  - CENTERLINE
  - ARC LENGTH
  - CHORD
  - CHORD BEARING
  - DELTA (CENTRAL ANGLE)
  - D.E. DRAINAGE EASEMENT
  - L.A.E. LIMITED ACCESS EASEMENT
  - L.M.A.E. LAKE MAINTENANCE ACCESS EASEMENT
  - L.M.E. LAKE MAINTENANCE EASEMENT
  - L.S.E. LIFT STATION EASEMENT
  - L.W.D.D. LAKE WORTH DRAINAGE DISTRICT
  - N.R. NON-RADIAL
  - O.R.B. OFFICIAL RECORDS BOOK
  - PG. PAGE
  - P.B. PLAT BOOK
  - P.B.C.R. PALM BEACH COUNTY RECORDS
  - P.O.B. POINT OF BEGINNING
  - P.O.C. POINT OF COMMENCEMENT
  - P.U.D. PLANNED UNIT DEVELOPMENT
  - R. RADIUS
  - R/W RIGHT-OF-WAY
  - SE SEWER EASEMENT
  - SF SQUARE FEET
  - U.E. UTILITY EASEMENT



KEY MAP  
N.T.S.